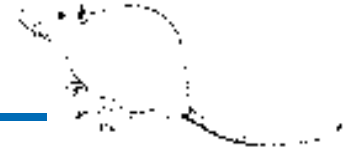




Subtotal Nephrectomy



Animal Preparation:

Fast animal the night before surgery.
Prepare animal for aseptic surgery using sterile instruments

Surgical Protocol:

Laparotomy to expose left kidney
Remove top 1/3 and bottom 1/3 of left kidney as follows: (Fig. A)
Have two pieces of gel foam cut to cover the cut surface of the kidney
Cut off upper or lower 1/3 in one stroke and immediately cover with gel foam, exerting mild pressure.
After cutting off second pole of kidney, maintain mild pressure on gel foam pads for approximately 1 minute.
Close laparotomy.

1 Week Later:

Do right side nephrectomy by retroperitoneal approach (Fig. B).
Shave back over kidney area
Palpate right kidney
Make longitudinal incision 2 cm long parallel to spine and 1 cm lateral.
Blunt dissect through back muscle to expose kidney
Ligate all vessels to right kidney and extirpate.
Close skeletal muscle with absorbable sutures.
Close skin.

Severity and speed of onset of hypertension can be increased by adding sodium to water or diet.

