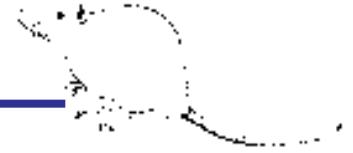




Negative Pressure System



Materials

- Container A - ungraduated cylinder
Fisher cat. no. 08-530G
300 high x 38 mm OD
stopper is #10 1/2 rubber
- Container B - 250 Erlenmeyer
- Container C - any small bottle with stopper

To establish proper degree of negative pressure:

1. Turn on the vacuum source
2. Clamp line 3
3. Adjust pinch clamp on line 1 until bubbles appear at bottom of Z tube in container
A bubble rate of 1/2 sec. is adequate
4. Release line 3-bubbles should now appear in Container B.

Check for leaks by clamping Line 4

Bubbles should appear only in Container A.

Pneumothorax

If animal has pneumothorax, bubbles will be produced mainly in container B. Once the chest is sealed, container B will have bubbles only infrequently.

