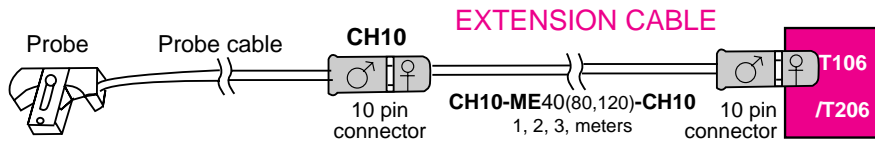




10-Pin Connectors

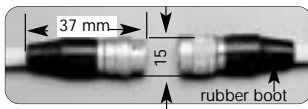
T106 and T108 flowmeters use ROM digital probe identification and calibration information



CH10

10-pin connector with embedded ROM

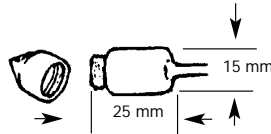
Designed for ease of use in acute flowprobe applications, this snap-in connector houses the complete digital information for the flowprobe. The CH10 can be plugged directly into the flowmeter or into a CH10 extension cable.



CS10

10-pin sealed connector with embedded ROM

Implantable connector with conical threaded protective cap has suture hole for easy guiding during subcutaneous tunneling. Complete digital probe information is sealed within connector. The CS10 can be plugged directly into the flowmeter or into a CH10 extension cable.

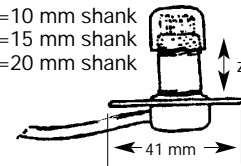


CB10

10-pin Skin Button with embedded ROM

For chronic implantation, the skin button has a removable anchor flange and flat protective cap. Shank comes in three heights; the cable enters the connector at a right angle. Complete digital probe information is sealed within connector. The CB10 plugs into a CH10 extension cable. *(Typically used in pigs or larger animal models)*

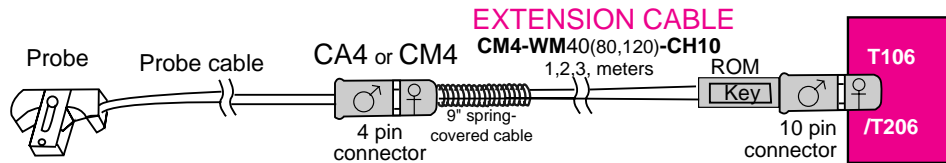
CB10-10: Z=10 mm shank
CB10-15: Z=15 mm shank
CB10-20: Z=20 mm shank



Miniature Connectors



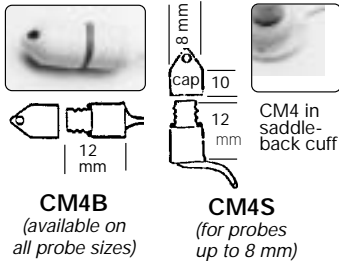
Miniature connectors for chronic implants. 4-pin connectors require a separate, specific ROM calibration key.



CM4

MINI 4-pin sealed connector with separate ROM key

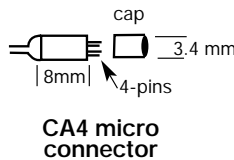
Implantable 4-pin mini-connector has two threaded protective caps and a digital coded key which is specific to each probe. Conical cap with suture hole is used for subcutaneous tunneling; a flat cap is provided for pin protection between measurements. Each probe must be used with its serial numbered key and a CM4 extension cable to the flowmeter; available in two cable configurations: CM4S or CM4B (side or back cable exit). We recommend our saddleback cuffs, (page 18) to stabilize the position for external use.



CA4

MICRO 4-pin sealed connector with separate ROM key

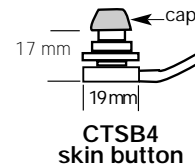
Designed for minimal impact, the 4-pins terminate the cable end with a bare minimum of housing. A cap is provided for limited pin protection. These connectors can be used where delicate chronic implantation requires the least impact from externalizing the connector end. Each probe must be used with its serial numbered key and a CM4 extension cable to the flowmeter. Only available for 1R, 1.5R, 2S, 2R, 2.5S 3R, 3S and 4S probes. These connectors are warranted for one implant only.



CTSB4

4-pin Skin Button with separate ROM key

In this configuration the implantable 4-pin mini-connector is embedded in a Delrin® skin button for chronic implantation. Each probe must be used with its serial numbered key and a CM4 extension cable to the flowmeter. The skin button has a 17 mm diameter long shank, a 19 mm anchor flange and a flat protective cap.



CPSB6

6-pin Pettinger Skin Button with separate ROM key

Designed and manufactured of titanium for longterm implantation. Requires conversion extension cable (see next page); special order only.

